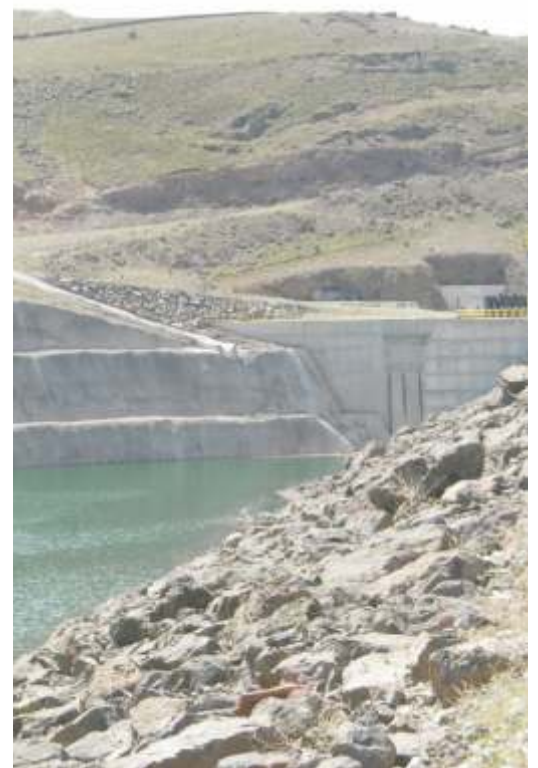


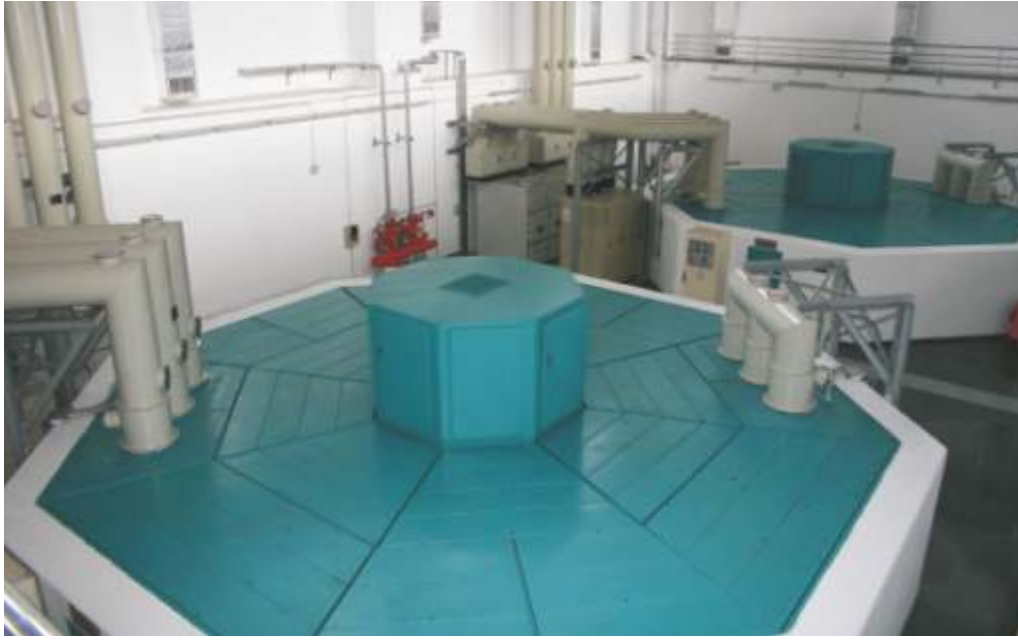


YAMULA DAM AND HEPP CONSTRUCTION



Central Anatolia Region
Kayseri - Yamula Village





Employer : KAYSERİ ELECTRICITY PRODUCTION INDUSTRY AND TRADE Co. Inc.
Contract date : 31.07.2000
Work completion date : 30.07.2005
Project cost : 37 950 000,00 US \$ + 71 956 411,72 TL (2004 unit prices)
 [37 950 000,00 US \$ + 51 397 444,29 US \$]

Yamula Dam is located on Kızılırmak River in the vicinity of Yamliha Village, 30 km northeast of the city of Kayseri, in Central Anatolia, having power production and irrigation purpose.

Within the scope of this 100 MW (2x50) power, built with Build-Operate-Transfer model project;
 Reservoir and Dam Body: Height 130 m, 6.5 million m³ fill volume clay core rock fill dam body, 85 km² pool area.

Headrace Tunnel : 7 m diameter, 248.77 m long steel coated
 Spillway : 5 500 m³/s capacity, 4 each radial gates controlled, with flip bucket
 Penstock : Total 202 m long 7-5-3 m variable diameter steel penstocks
 Power Plant : 100 MW (2 x 50) installed power and 154 kV switchyard were constructed.
 Annual production : 423 560 000 kWh/year



AYDINER